

**MULTISCREEN™ STABLE CELL LINE**  
**HUMAN RECOMBINANT 5-HT1A RECEPTOR**

**Data sheet**

**PRODUCT INFORMATION**

**Catalog Number:** C1319

**Lot Number:** C1319-042310

**Quantity:** 1 vial (2 x 10<sup>6</sup>) frozen cells

**Freeze Medium:** Sigma Freezing Medium (C-6164)

**Host cell:** HEK293T

**Transfection:** Expression vector containing full-length human HTR1A cDNA (GenBank accession number NM\_000524.2) with FLAG tag sequence at N-terminus

**Recommended Storage:** Liquid nitrogen upon receiving

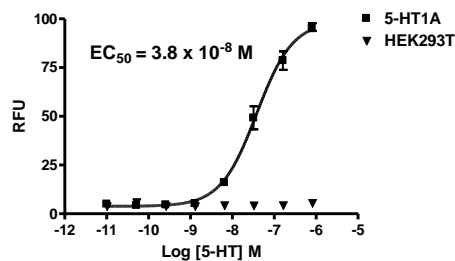
**Propagation Medium:** DMEM, 10% FBS, 1 µg/mL puromycin

**Stability:** Stable in culture for minimum of two months

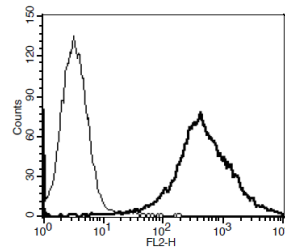
**Background:** The human serotonin receptor 5-HT1A is a G protein-coupled receptor. 5-HT1A receptors can be found mainly in the cerebral cortex, hippocampus, septum, amygdala, and raphe nucleus, with lesser amounts in the basal ganglia and thalamus. 5-HT1A ligands may prove to be therapeutic in the treatment of various disorders such as depression, anxiety, and schizophrenia.

**Application:** Functional assays

**Figure 1**



**Figure 2**



**Figure 1.** Dose-dependent stimulation of calcium flux upon treatment with ligand, measured with Multiscreen™ Calcium 1.0 No Wash Assay Kit (Multispan MSCA01). **2.** Receptor expression on cell surface measured by flow cytometry (FACS) using an anti-FLAG antibody. Thin line: parental cells; thick line: receptor-expressing cells.

**References:**

Hamon *et al.* (1990) The main features of central 5-HT1 receptors. *Neuropsychopharmacology* 3:349-360.

Savitz *et al.* (2009) 5-HT(1A) receptor function in major depressive disorder. *Prog Neurobiol* 88:17-31.

Stam *et al.* (1992) Genomic organization, coding sequence and functional expression of human 5-HT2 and 5-HT1A receptor genes. *Eur J Pharmacol* 227:153-162.

**FOR RESEARCH USE ONLY.**

Multispan Inc. All rights reserved. No part of this document may be reproduced in any form without prior permission in writing.