

**MULTISCREEN™ STABLE CELL LINE
HUMAN RECOMBINANT BB1 RECEPTOR**

Data sheet

PRODUCT INFORMATION

Catalog Number: C1211

Lot Number: C1211-110409

Quantity: 1 vial (2×10^6) frozen cells

Freeze Medium: Sigma Freezing Medium (C-6164)

Host cell: HEK293T

Transfection: Expression vector containing full-length human NMBR cDNA (GenBank Accession Number NM_002511.1) with FLAG tag sequence at N-terminus

Recommended Storage: Liquid nitrogen upon receiving

Propagation Medium: DMEM, 10% FBS, 1 µg/mL puromycin

Stability: Stable after minimum of two months continuous growth

Background: The human BB1 receptor (or Neuromedin B receptor NMBR) is a receptor for neuromedin-B (NMB), which is a mammalian bombesin-like peptide distributed widely in the central nervous system. The BB1 pathway is involved in the regulation of a wide variety of behaviors, such as spontaneous activity, feeding and anxiety-related behavior. A study using BB1-deficient mice suggested that dysfunction in the BB1 pathway may constitute one of the risk factors of stress vulnerability.

Application: Functional assays

Figure 1

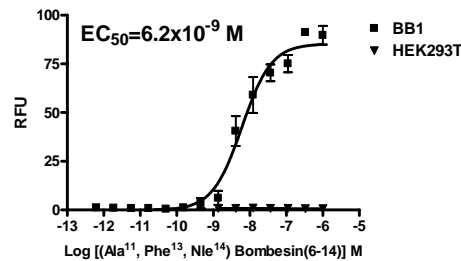


Figure 2

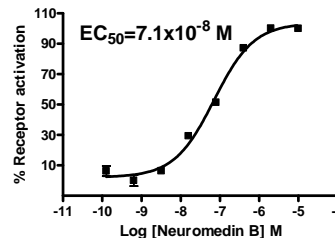


Figure 3

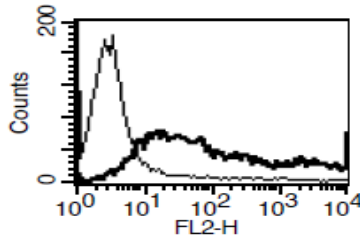


Figure 1. Dose-dependent stimulation of calcium flux upon treatment with ligand, monitored with FlexStation. **Figure 2.** Dose-dependent accumulation of intracellular IP1 upon treatment with ligand, measured with IP-one Tb kit (Cisbio 62IPAPEC). **Figure 3.** Receptor expression on cell surface measured by flow cytometry (FACS) using an anti-FLAG antibody. Thin line: parental cells; thick line: receptor-expressing cells.

References:

Benya *et al.* (1995) Expression and characterization of cloned human bombesin receptors. *Mol Pharmacol* 47:10-20.

Moody *et al.* (2000) Nonpeptide neuromedin B receptor antagonists inhibit the proliferation of C6 cells. *Eur J Pharmacol* 409:133-142.

Yamada *et al.* (2002) Restraint stress impaired maternal behavior in female mice lacking the neuromedin B receptor (NMB-R) gene. *Neurosci Lett* 330:163-166.

FOR RESEARCH USE ONLY.

© 2005 Multispan Inc. All rights reserved. No part of this document may be reproduced in any form without prior permission in writing.

www.multispaninc.com
sales@multispaninc.com
support@multispaninc.com

Ver. October 2005

Phone: +1 (510) 887-0817
Fax: +1 (510) 887-0863
26219 Eden Landing Road
Hayward, CA 94545-3718
U.S.A.