

MULTISCREEN™ STABLE CELL LINE HUMAN RECOMBINANT CCR8 RECEPTOR

Data sheet

PRODUCT INFORMATION

Catalog Number: C1016

Lot Number: C1016-051506

Quantity: 1 vial (2×10^6) frozen cells

Freeze Medium: Sigma Freezing Medium (C-6164)

Host cell: HEK293T

Transfection: Expression vector containing full-length human CCR8 cDNA (GenBank Accession Number: NM_005201.2) with FLAG tag sequence at N-terminus

Recommended Storage: Liquid nitrogen upon receiving

Propagation Medium: DMEM, 10% FBS, 1 μ g/mL puromycin

Stability: Stable in culture for minimum of two months

Background: CCR8 (C-C chemokine receptor type 8) is a receptor for the chemokines CCL1 (I-309). The receptor regulates monocyte chemotaxis and thymic cell line apoptosis, and is an additional alternative coreceptor with CD4 for HIV-1 infection. CCR8 plays a role on cell types of relevance to respiratory diseases such as asthma, chronic obstructive pulmonary disease (COPD) and chronic bronchitis. The interference of CCR8 from its ligand represents a new approach in allergy therapy.

Application: Functional assays.

Figure 1

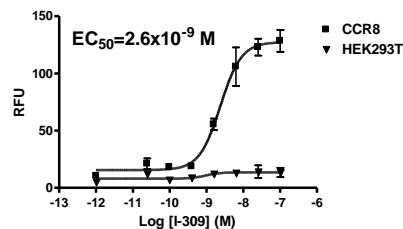


Figure 2

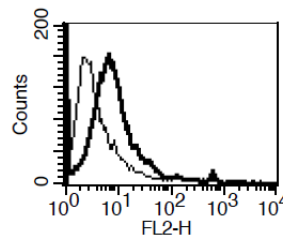


Figure 1. Dose-dependent stimulation of calcium flux upon treatment with ligand, monitored with FlexStation. **Figure 2.** Receptor expression on cell surface measured by flow cytometry (FACS) using an anti-FLAG antibody. Thin line: parental cells; thick line: receptor-expressing cells.

References:

Simmons *et al.* (2000) Co-receptor use by HIV and inhibition of HIV infection by chemokine receptor ligands. *Immunol Rev* 177:112-126.

Garcia *et al.* (2005) New chemokine targets for asthma therapy. *Curr Allergy Asthma Rep* 5:155-160

FOR RESEARCH USE ONLY.

© 2005 Multispan Inc. All rights reserved. No part of this document may be reproduced in any form without prior permission in writing.

www.multispaninc.com
sales@multispaninc.com
support@multispaninc.com

Ver. October 2005

Phone: +1 (510) 887-0817
Fax: +1 (510) 887-0863
26219 Eden Landing Road
Hayward, CA 94545-3718
U.S.A.