

**MULTISCREEN™ STABLE CELL LINE
HUMAN RECOMBINANT CCR10 RECEPTOR**

Data sheet

PRODUCT INFORMATION

Catalog Number: C1018

Lot Number: C1018-020211

Quantity: 1 vial (2×10^6) frozen cells

Freeze Medium: Sigma Freezing Medium (C-6164)

Host cell: HEK293T

Transfection: Full-length human CCR10 cDNA (GenBank accession Number NM_016602.2) with FLAG tag sequence at N-terminus

Recommended Storage: Liquid nitrogen upon receiving

Propagation Medium: DMEM, 10% FBS, 1 μ g/mL puromycin

Stability: Stable in culture for minimum of two months

Background: CCR10 (also known as GPR2) is selectively expressed by IgA-secreting cells including circulating IgA+ plasmablasts, as well as almost all IgA+ plasma cells in the salivary gland, small intestine, large intestine, appendix and tonsils. It is a receptor for CCL27/CTACK and CCL28/MEC. Expression of CCL27 in skin may play an important role in facilitating memory T cells that express CCR10 to enter into cutaneous sites during inflammation and in determining the metastatic destination of malignant melanoma.

Application: Functional assays

Figure 1

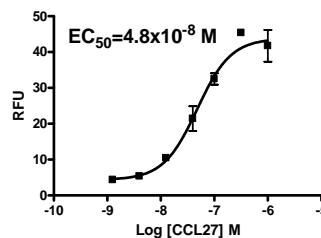


Figure 2

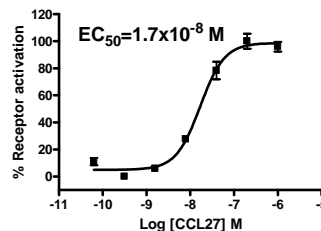
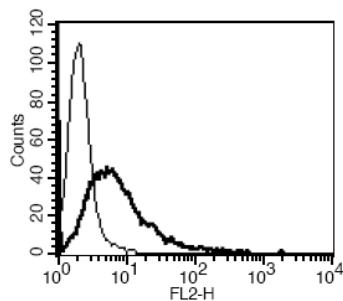


Figure 1. Dose-dependent stimulation of calcium flux upon treatment with ligand, monitored with FlexStation. **Figure 2.** Dose-dependent inhibition of forskolin-stimulated intracellular cAMP level upon treatment with ligand, measured with cAMP HiRange kit (Cisbio 62AM6PEC). **Figure 3.** Receptor Expression on cell surface measured by flow cytometry (FACS) using an anti-FLAG antibody. Thin line: parental cells; thick line: receptor-expressing cells.

Figure 3



References:

Muller *et al.* (2001) Involvement of chemokine receptors in breast cancer metastasis. *Nature* 410:50-56.

Kunkel *et al.* (2003) CCR10 expression is a common feature of circulating and mucosal epithelial tissue IgA Ab-secreting cells. *J Clin Invest* 111:1001-1010.

Hudak *et al.* (2002) Immune surveillance and effector functions of CCR10(+) skin homing T cells. *J Immunol* 169:1189-1196.

FOR RESEARCH USE ONLY.

© 2005 Multispan Inc. All rights reserved. No part of this document may be reproduced in any form without prior permission in writing.

www.multispaninc.com
sales@multispaninc.com
support@multispaninc.com

Ver. October 2005

Phone: +1 (510) 887-0817
Fax: +1 (510) 887-0863
26219 Eden Landing Road
Hayward, CA 94545-3718
U.S.A.