

**MULTISCREEN™ STABLE CELL LINE
HUMAN RECOMBINANT LPA3 (EDG7) RECEPTOR**

Data sheet

PRODUCT INFORMATION

Catalog Number: C1053-6

Lot Number: C1053-6-081009

Quantity: 1 vial (2×10^6) frozen cells

Freeze Medium: Sigma Freezing Medium (C-6164)

Host cell: RH7777

Transfection: Expression vector containing full-length human LPAR3 cDNA (GenBank Accession Number NM_012152) with FLAG tag sequence at N-terminus

Recommended Storage: Liquid nitrogen upon receiving

Propagation Medium: DMEM, 10% FBS, 3 μ g/mL puromycin

Stability: Stable after minimum two months continuous growth

Background: LPA and the structurally related lysophospholipid mediator sphingosine 1-phosphate (S1P) signal cells through a set of G protein-coupled receptors known as EDG receptors. Some EDG receptors (e.g., EDG1) are S1P receptors; others (e.g., EDG2) are LPA receptors. LPA3 receptor (EDG7) mediates responses preferentially to unsaturated LPA, whereas LPA2 receptor (EDG4) mediates responses to both saturated and unsaturated LPA.

Application: Functional assays

Figure 1

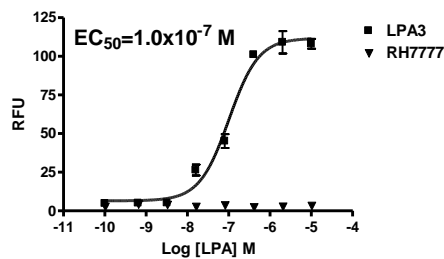


Figure 2

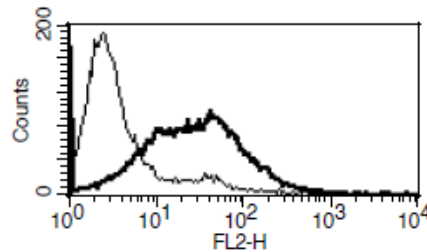


Figure 1. Dose-dependent stimulation of calcium flux upon treatment with ligand, monitored with FlexStation. **Figure 2.** Receptor expression on cell surface measured by flow cytometry (FACS) using an anti-FLAG antibody. Thin line: parental cells; thick line: receptor-expressing cells.

References:

Bandoh *et al.* (1999) Molecular cloning and characterization of a novel human G-protein-coupled receptor, EDG7, for lysophosphatidic acid. *J. Biol. Chem.* 274:27776-27785.

Ye *et al.* (2005) LPA3-mediated lysophosphatidic acid signalling in embryo implantation and spacing. *Nature* 435:104-108.

FOR RESEARCH USE ONLY.

© 2005 Multispan Inc. All rights reserved. No part of this document may be reproduced in any form without prior permission in writing.

www.multispaninc.com
sales@multispaninc.com
support@multispaninc.com

Ver. October 2005

Phone: +1 (510) 887-0817
Fax: +1 (510) 887-0863
26219 Eden Landing Road
Hayward, CA 94545-3718
U.S.A.