

**MULTISCREEN™ STABLE CELL LINE  
HUMAN RECOMBINANT GPR55 RECEPTOR**

**Data sheet**

**PRODUCT INFORMATION**

**Catalog Number:** C1113b

**Lot Number:** C1113b-051310

**Quantity:** 1 vial (2 x 10<sup>6</sup>) frozen cells

**Freeze Medium:** Sigma Freezing Medium (C-6164)

**Host cell:** HEK293T

**Transfection:** Full-length Human GPR55 cDNA (GenBank Accession Number NM\_005683.3) with FLAG-tag sequence at the N-terminus

**Recommended Storage:** Liquid nitrogen upon receiving

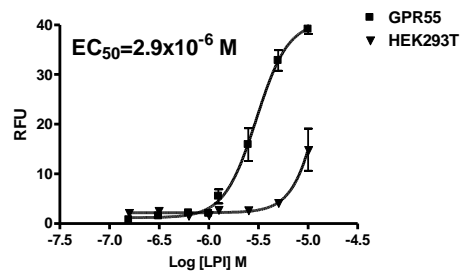
**Propagation Medium:** DMEM, 10% FBS, 1 µg/mL puromycin

**Stability:** Stable in culture for minimum of two months

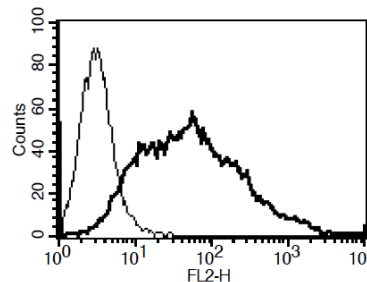
**Background:** GPR55 is a putative cannabinoid receptor. Its gene was mapped to chromosome 2q37, using fluorescence in situ hybridization (FISH), and its mRNA transcripts have been detected in the caudate nucleus and putamen. Recently, GPR55 was identified as a receptor for the bioactive lipid lysophosphatidylinositol (LPI).

**Application:** Functional assays

**Figure 1**



**Figure 2**



**Figure 1.** Dose-dependent stimulation of calcium flux upon treatment with ligand, monitored with FlexStation. **Figure 2.** Receptor expression on cell surface measured by flow cytometry (FACS) using an anti-FLAG antibody. Thin line: parental cells; thick line: receptor-expressing cells.

**References:**

Sawzdargo *et al.* (1999). Identification and cloning of three novel human G protein-coupled receptor genes GPR52, PsiGPR53 and GPR55: GPR55 is extensively expressed in human brain. *Brain Res Mol Brain Res* 64:193-198.

Oka *et al.* (2007) Identification of GPR55 as a lysophosphatidylinositol receptor. *Biochem Biophys Res Commun* 362:928-934.

**FOR RESEARCH USE ONLY.**

© 2005 Multispan Inc. All rights reserved. No part of this document may be reproduced in any form without prior permission in writing.

www.multispaninc.com  
sales@multispaninc.com  
support@multispaninc.com

Ver. October 2005

Phone: +1 (510) 887-0817  
Fax: +1 (510) 887-0863  
26219 Eden Landing Road  
Hayward, CA 94545-3718  
U.S.A.