

**MULTISCREEN™ STABLE CELL LINE
HUMAN RECOMBINANT DP1 RECEPTOR**

Data sheet

PRODUCT INFORMATION

Catalog Number: C1200

Lot Number: C1200-061006

Quantity: 1 vial (2×10^6) frozen cells

Freeze Medium: Sigma Freezing Medium (C-6164)

Host cell: HEK293T

Transfection: Expression vector containing full-length human DP cDNA (GenBank Accession Number NM_000953) with FLAG tag sequence at N-terminus

Recommended Storage: Liquid nitrogen upon receiving

Propagation Medium: DMEM, 10% FBS, 1 μ g/mL puromycin

Stability: Stable after minimum of 2 months continuous growth

Background: The prostaglandin D2 receptor DP1 (DP or PTGDR) is a G protein-coupled receptor for the prostaglandin D2 (PGD2). PGD2 signals through DP2 (CRTH2) to induce TH2, eosinophil, and basophil chemotaxis in a Gai-dependent manner. In contrast, signaling through DP1 is coupled to Gas and does not induce chemotaxis.

Application: Functional assays

Figure 1

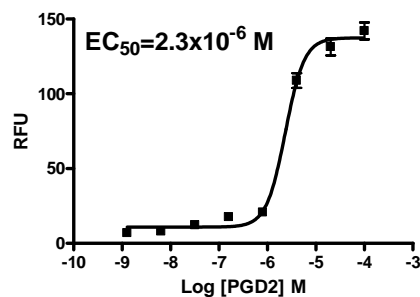


Figure 2

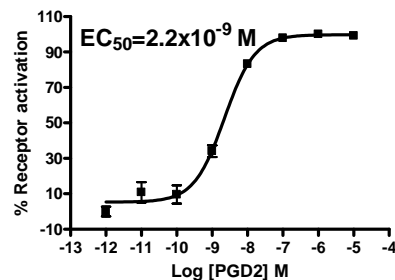


Figure 3

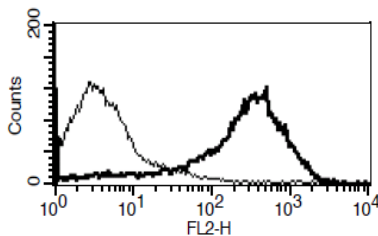


Figure 1. Dose-dependent stimulation of calcium flux upon treatment with ligand, monitored with FlexStation. **Figure 2.** Dose-dependent increase of intracellular cAMP level upon treatment with ligand, measured with cAMP HiRange kit (Cisbio 62AM6PEC). **Figure 3.** Receptor expression on cell surface measured by flow cytometry (FACS) using an anti-FLAG antibody. Thin line: parental cells; thick line: receptor-expressing cells.

References:

Boie *et al.* (1995) Molecular cloning and characterization of the human prostanoid DP receptor. *J Biol Chem* 270:18910-18916.

Hirai *et al.* (2001) Prostaglandin D2 selectively induces chemotaxis in T helper type 2 cells, eosinophils, and basophils via seven-transmembrane receptor CRTH2. *J Exp Med* 193:255-261.

FOR RESEARCH USE ONLY.

© 2005 Multispan Inc. All rights reserved. No part of this document may be reproduced in any form without prior permission in writing.

www.multispaninc.com
sales@multispaninc.com
support@multispaninc.com

Ver. October 2005

Phone: +1 (510) 887-0817
Fax: +1 (510) 887-0863
26219 Eden Landing Road
Hayward, CA 94545-3718
U.S.A.