

**MULTISCREEN™ STABLE CELL LINE
HUMAN RECOMBINANT ET_A RECEPTOR**

Data sheet

PRODUCT INFORMATION

Catalog Number: C1216-1

Lot Number: C1216-1-072010

Quantity: 1 vial (2×10^6) frozen cells

Freeze Medium: Sigma Freezing Medium (C-6164)

Host cell: CHO-K1

Transfection: Full-length Human EDNRA cDNA (GenBank Accession Number NM_001957.1) with FLAG-tag sequence at the N-terminus

Recommended Storage: Liquid nitrogen upon receiving

Propagation Medium: DME/F12, 10% FBS, 10 µg/mL puromycin

Stability: Stable in culture for minimum of two months

Background: Endothelin is a hormone produced predominantly by endothelial cells that have been recognized to play a significant role in the development of several cardiovascular disease states. Its receptor ET_A has been reported in a variety of tissues including placenta, uterus, testis, heart, adrenal gland, lung, kidney, ovary, skin, liver, bladder, large blood vessels, cerebellum, neurons, and meningioma tumor cells. In the vasculature, ET_A receptors residing on smooth muscle cells mediate prolonged vasoconstriction. Furthermore, activation of the ET_A mediates events that regulate mitogenesis, apoptosis, angiogenesis and metastasis in tumors.

The Multispan ET_A receptor cell line expresses EDNRA cDNA that is identical to GenBank NM_001957.1 except for 1 mutation that results in a change in amino acid Leu → Val at position 322, which has been reported as a natural variant.

Application: Functional assays

Figure 1

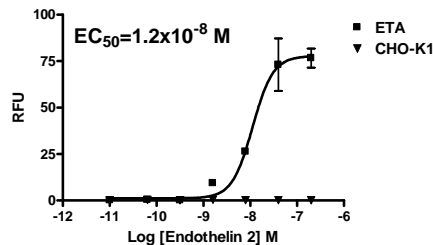


Figure 2

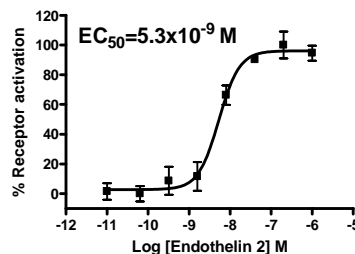


Figure 3

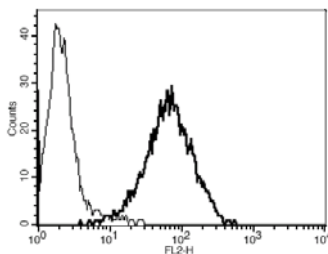


Figure 1. Dose-dependent stimulation of calcium flux upon treatment with ligand, monitored with FlexStation. **Figure 2.** Dose-dependent stimulation of intracellular cAMP accumulation upon treatment with ligand, measured with cAMP HiRange kit (Cisbio 62AM6PEC). **Figure 3.** Receptor expression on cell surface measured by flow cytometry (FACS) using an anti-FLAG antibody. Thin line: parental cells; thick line: receptor-expressing cells.

References:

Dupuis (2000) Endothelin receptor antagonists and their developing role in cardiovascular therapeutics. *Can J Cardiol* 16:903-910.

Wu-Wong (2002) Endothelin receptor antagonists as therapeutic agents for cancer. *Curr Opin Investig Drugs* 3:1234-1239.

FOR RESEARCH USE ONLY.

© 2005 Multispan Inc. All rights reserved. No part of this document may be reproduced in any form without prior permission in writing.

www.multispaninc.com
sales@multispaninc.com
support@multispaninc.com

Ver. October 2005

Phone: +1 (510) 887-0817
Fax: +1 (510) 887-0863
26219 Eden Landing Road
Hayward, CA 94545-3718
U.S.A.