

**MULTISCREEN™ STABLE CELL LINE**  
**HUMAN RECOMBINANT C3A RECEPTOR**

**PRODUCT INFORMATION**

**Catalog Number:** C1222

**Lot Number:** C1222--091505

**Quantity:** 1 vial ( $2 \times 10^6$ ) frozen cells

**Freeze Medium:** Sigma Freezing Medium (C-6164)

**Host cell:** HEK293T

**Transfection:** Expression vector containing full-length human C3AR1 cDNA (GenBank Accession Number NM\_004054.2) with FLAG tag sequence at N-terminus

**Recommended Storage:** Liquid nitrogen upon receiving

**Propagation Medium:** DMEM, 10% FBS, 1  $\mu$ g/mL puromycin

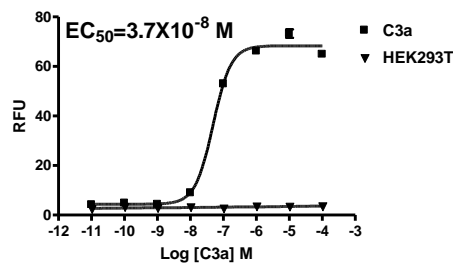
**Stability:** Stable after minimum of 2 months continuous growth

**Data sheet**

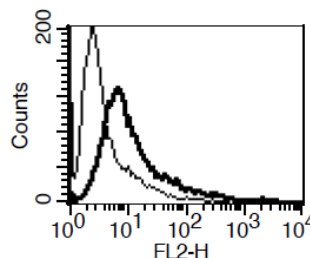
**Background:** C3a receptor (C3a anaphylatoxin chemotactic receptor) is a receptor for the chemotactic and inflammatory peptide anaphylatoxin C3a. The receptor is widely expressed in many hematopoietic cell lines, throughout the CNS and other tissues, and the expression level in glial cells increases during CNS inflammation. It stimulates chemotaxis, granule enzyme release and superoxide anion production, mediates the pathogenesis of demyelinating disease by directly or indirectly chemoattracting encephalitogenic cells to the CNS. Administration of small molecule inhibitors of C3a receptor inhibits airway responses.

**Application:** Functional assays

**Figure 1**



**Figure 2**



**Figure 1.** Dose-dependent stimulation of calcium flux upon treatment with ligand, monitored with FlexStation. **Figure 2.** Receptor expression on cell surface measured by flow cytometry (FACS) using an anti-FLAG antibody. Thin line: parental cells; thick line: receptor-expressing cells.

**References:**

Boos *et al.* (2004) Deletion of the complement anaphylatoxin C3a receptor attenuates, whereas ectopic expression of C3a in the brain exacerbates, experimental autoimmune encephalomyelitis. *J Immunol* 173:4708-14.

Ali and Panettieri, Jr. (2005) Anaphylatoxin C3a receptors in asthma. *Respir Res* 6:19.

**FOR RESEARCH USE ONLY.**

© 2005 Multispan Inc. All rights reserved. No part of this document may be reproduced in any form without prior permission in writing.

www.multispaninc.com  
sales@multispaninc.com  
support@multispaninc.com

Ver. October 2005

Phone: +1 (510) 887-0817  
Fax: +1 (510) 887-0863  
26219 Eden Landing Road  
Hayward, CA 94545-3718  
U.S.A.