

**MULTISCREEN™ STABLE CELL LINE
HUMAN RECOMBINANT GPR120 RECEPTOR**

Data sheet

PRODUCT INFORMATION

Catalog Number: C1294

Lot Number: C1294-062008

Quantity: 1 vial (2×10^6) frozen cells

Freeze Medium: Sigma Freezing Medium (C-6164)

Host cell: HEK293T

Transfection: Expression vector containing full-length human GPR120 cDNA (GenBank Accession Number: BC101175.2) with FLAG tag sequence at N-terminus

Recommended Storage: Liquid nitrogen upon receiving

Propagation Medium: DMEM, 10% FBS, 1 μ g/mL puromycin

Stability: Stable in culture for minimum of two months

Background: GPR120 is a G protein-coupled receptor for the long-chain free fatty acids. GPR120 mediated calcium mobilization, Erk1/Erk2 activation and GLP1 secretion. Unsaturated long-chain FFAs had a dose-dependent stimulatory effect, and α -linolenic acid was the most potent. GPR120 and GLP1 colocalized in human colonic intraepithelial neuroendocrine cells, and GPR120 may mediate dietary FFA-stimulated GLP1 secretion.

Application: Functional assays

Figure 1

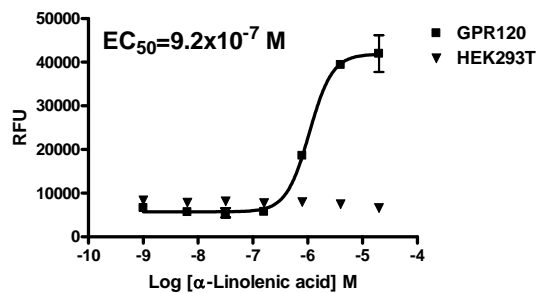


Figure 2

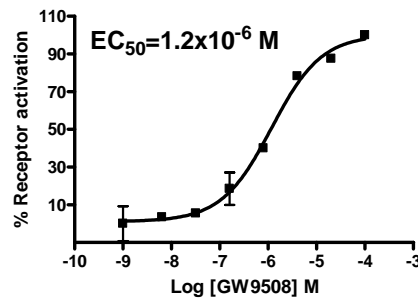


Figure 1. Dose-dependent stimulation of calcium flux upon treatment with ligand, monitored with FlexStation. **Figure 2.** Dose-dependent accumulation of intracellular IP1 upon treatment with ligand, measured with IP-one Tb kit (Cisbio 62IPAPeC). **Figure 3.** Receptor Expression on cell surface measured by flow cytometry (FACS) using an anti-FLAG antibody. Thin line: parental cells; thick line: receptor-expressing cells.

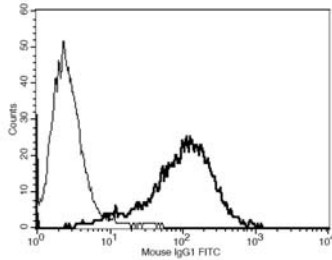
References:

Fredriksson *et al.* (2003) Seven evolutionarily conserved human rhodopsin G protein-coupled receptors lacking close relatives. *FEBS Lett* 554:381-388.

Hirasawa *et al.* (2005) Free fatty acids regulate gut incretin glucagon-like peptide-1 secretion through GPR120. *Nature Med* 11:90-94.

FOR RESEARCH USE ONLY.

Figure 3



© 2005 Multispan Inc. All rights reserved. No part of this document may be reproduced in any form without prior permission in writing.

www.multispaninc.com
sales@multispaninc.com
support@multispaninc.com

Phone: +1 (510) 887-0817
Fax: +1 (510) 887-0863
26219 Eden Landing Road
Hayward, CA 94545-3718
U.S.A.