

MULTISCREEN™ STABLE CELL LINE
HUMAN RECOMBINANT NPY4 RECEPTOR

Data sheet

PRODUCT INFORMATION

Catalog Number: C1300-1

Lot Number: C1300-1-051506

Quantity: 1 vial (2×10^6) frozen cells

Freeze Medium: Sigma Freezing Medium (C-6164)

Host cell: CHO-K1

Transfection: Expression vector containing full-length human NPY4R cDNA (GenBank Accession Number AY268432) with FLAG tag sequence at N-terminus

Recommended Storage: Liquid nitrogen upon receiving

Propagation Medium: DMEM-F12, 10% FBS, 10µg/mL puromycin

Stability: Stable after minimum of 2 months continuous growth

Background: NPY4R (Y4) has been reported to be expressed at highest levels in brain, coronary artery and ileum. Low levels in pancreas and kidney. It is also been detected in colon and small intestine and isolated from human colon and head/neck libraries. It is one of the receptors for neuropeptide Y and peptide YY. The rank order of affinity of this receptor for pancreatic polypeptides is PP, PP (2-36) and [Ile-31, Gln-34] PP > [Pro-34] PYY > PYY and [Leu-31, Pro-34] NPY > NPY > PYY (3-36) and NPY (2-36) > PP (13-36) > PP (31-36) > NPY free acid. Ligand: Neuropeptide Y, Peptide YY.

Application: Functional assays

Figure 1

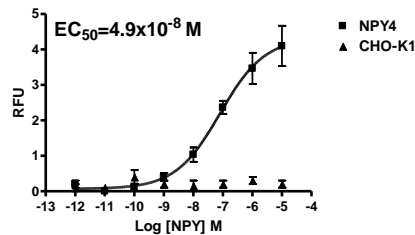


Figure 2

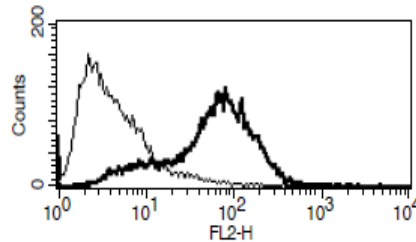


Figure 1. Dose-dependent stimulation of intercellular calcium flux upon treatment with ligand, monitored with FlexStation. **Figure 2.** Receptor expression on cell surface measured by flow cytometry (FACS) using an anti-FLAG antibody. Thin line: parental cells; thick line: receptor-expressing cells.

References:

Bard *et al.* (1995) Cloning and functional expression of a human Y4 subtype receptor for pancreatic polypeptide, neuropeptide Y, and peptide YY. *J Biol Chem* 270:26762-26765.

Yan *et al.* (1996) Cloning and functional expression of cDNAs encoding human and rat pancreatic polypeptide receptors. *Proc Natl Acad Sci USA* 93:4661-4665.

FOR RESEARCH USE ONLY.

© 2005 Multispan Inc. All rights reserved. No part of this document may be reproduced in any form without prior permission in writing.

www.multispaninc.com
sales@multispaninc.com
support@multispaninc.com

Ver. October 2005

Phone: +1 (510) 887-0817
Fax: +1 (510) 887-0863
26219 Eden Landing Road
Hayward, CA 94545-3718
U.S.A.