

**MULTISCREEN™ STABLE CELL LINE
HUMAN RECOMBINANT D2 RECEPTOR**

Data sheet

PRODUCT INFORMATION

Catalog Number: C1336a

Lot Number: C1336a-072209

Quantity: 1 vial (2×10^6) frozen cells

Freeze Medium: Sigma Freezing Medium (C-6164)

Host cell: HEK293T

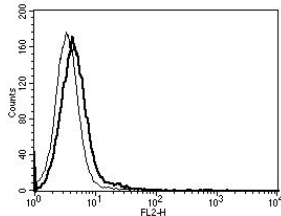
Transfection: Expression vector containing full-length human DRD2 cDNA (GenBank Accession Number NM_000795.3) with FLAG tag sequence at N-terminus

Recommended Storage: Liquid nitrogen upon receiving

Propagation Medium: DMEM, 10% FBS, 1 μ g/mL puromycin

Stability: Stable after minimum two months continuous growth.

Figure 3



Background: The human dopamine receptor DRD2 (D2) is a G protein-coupled receptor for dopamine. It can be found on postsynaptic dopaminergic neurons that are centrally involved in reward-mediating mesocorticolimbic pathways. Signaling through dopamine D2 receptors governs physiological functions related to locomotion, hormone production, and drug abuse.

Application: Functional assays

Figure 1

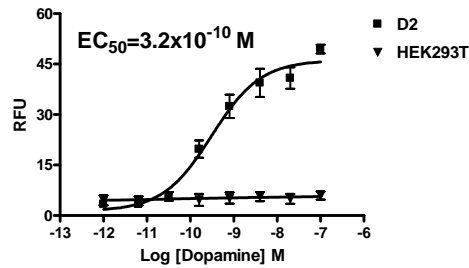


Figure 2

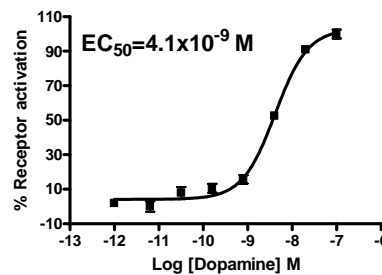


Figure 1. Dose-dependent stimulation of calcium flux upon treatment with ligand, monitored with FlexStation. **Figure 2.** Dose-dependent inhibition of forskolin-stimulated intracellular cAMP level upon treatment with ligand, measured with cAMP HiRange kit (Cisbio 62AM6PEC). **Figure 3.** Receptor expression on cell surface measured by flow cytometry (FACS) using an anti-FLAG antibody. Thin line: parental cells; thick line: receptor-expressing cells.

References:

Grandy *et al.* (1989) Cloning of the cDNA and gene for a human D2 dopamine receptor. *Proc Nat Acad Sci USA* 86:9762-9766.

Neville *et al.* (2004) Identification and characterization of ANKK1: a novel kinase gene closely linked to DRD2 on chromosome band 11q23.1. *Hum Mutat* 23:540-545.

Usiello *et al.* (2000) Distinct functions of the two isoforms of dopamine D2 receptors. *Nature* 408:199-203.

FOR RESEARCH USE ONLY.

© 2005 Multispan Inc. All rights reserved. No part of this document may be reproduced in any form without prior permission in writing.

www.multispaninc.com
sales@multispaninc.com
support@multispaninc.com

Ver. October 2005

Phone: +1 (510) 887-0817
Fax: +1 (510) 887-0863
26219 Eden Landing Road
Hayward, CA 94545-3718
U.S.A.