

**MULTISCREEN™ STABLE CELL LINE  
HUMAN RECOMBINANT SST1 RECEPTOR**

**Data sheet**

**PRODUCT INFORMATION**

**Catalog Number:** C1345-1a

**Lot Number:** C1345-1a-081910

**Quantity:** 1 vial ( $2 \times 10^6$ ) frozen cells

**Freeze Medium:** Sigma Freezing Medium (C-6164)

**Host cell:** CHO-K1

**Transfection:** Expression vector containing full-length human SSTR1 cDNA (GenBank accession number AY322536) with FLAG tag sequence at N-terminus

**Recommended Storage:** Liquid nitrogen upon receiving

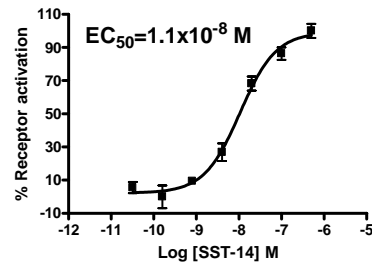
**Propagation Medium:** DMEM/F12, 10% FBS, 10  $\mu$ g/ mL puromycin

**Stability:** Stable in culture for minimum of two months

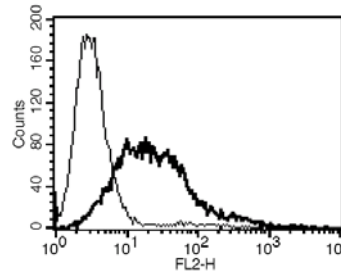
**Background:** Somatostatin receptors (SSTRs) are activated by somatostatin secreted from nerve and endocrine cells. SSTRs are expressed in a tissue-specific manner and involved in the regulation of secretion of insulin, glucagon and growth hormone as well as cell growth induced by neuronal excitation in both the central and peripheral nervous systems. Aberrant expression of somatostatin receptors is known in a large number of human tumors. SSTR1 has been reported at highest levels in the jejunum and stomach. In addition, this receptor is expressed in adrenal, brain, liver, lung, eye, and pancreas. Selective activation of SSTR1 inhibits hormone secretion and cell viability in GH-secreting and PRL-secreting adenomas *in vitro*.

**Application:** Functional assays

**Figure 1**



**Figure 2**



**Figure 1.** Dose-dependent inhibition of forskolin-stimulated intracellular cAMP accumulation upon treatment with ligand, measured with cAMP HiRange kit (Cisbio 62AM6PEC). **Figure 2.** Receptor expression on cell surface measured by flow cytometry (FACS) using an anti-FLAG antibody. Thin line: parental cells; thick line: receptor-expressing cells.

**References:**

Ardjomand *et al.* (2003) Expression of somatostatin receptors in uveal melanomas. *Invest Ophthalmol Vis Sci* 44:980-987.

Bertherat *et al.* (2003) Somatostatin receptors 2 and 5 are the major somatostatin receptors in insulinomas: an *in vivo* and *in vitro* study. *J Clin Endocr Metab* 88:5353-5360.

**FOR RESEARCH USE ONLY.**

© 2005 Multispan Inc. All rights reserved. No part of this document may be reproduced in any form without prior permission in writing.

www.multispaninc.com  
sales@multispaninc.com  
support@multispaninc.com

Ver. October 2005

Phone: +1 (510) 887-0817  
Fax: +1 (510) 887-0863  
26219 Eden Landing Road  
Hayward, CA 94545-3718  
U.S.A.