

**MULTISCREEN™ STABLE CELL LINE**  
**HUMAN RECOMBINANT α2A RECEPTOR**

**Data sheet**

**PRODUCT INFORMATION**

**Catalog Number:** C1434-1a

**Lot Number:** C1434-1a-040109

**Quantity:** 1 vial (2 x 10<sup>6</sup>) frozen cells

**Freeze Medium:** Sigma Freezing Medium (C-6164)

**Host cell:** CHO-K1

**Transfection:** Expression vector containing full-length human ADRA2A cDNA (GenBank accession Number NM\_000681.2) with FLAG tag sequence at N-terminus

**Recommended Storage:** Liquid nitrogen upon receiving

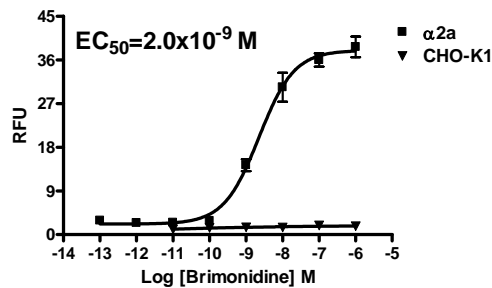
**Propagation Medium:** DMEM/F12, 10% FBS, 10 µg/mL puromycin

**Stability:** Stable in culture for minimum of two months

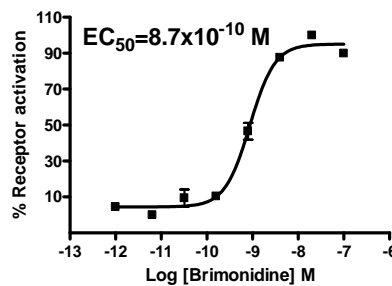
**Background:** Adrenergic α2a receptor belongs to the group of nine adrenoceptors that mediate the biological actions of adrenaline and noradrenaline. The α2a receptor is expressed in the brain, spleen, kidney, heart and gastrointestinal tract. It is centrally predominant and exerts a tonic sympathoinhibitory function, whereas peripherally it has a vasoconstrictive effect. The α2a receptor is also involved in sedation, digestive functions and analgesia.

**Application:** Functional assays

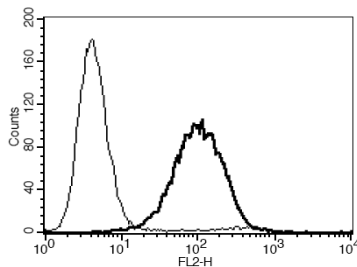
**Figure 1**



**Figure 2**



**Figure 3**



**Figure 1.** Dose-dependent stimulation of calcium flux upon treatment with ligand, monitored with FlexStation. **Figure 2.** Dose-dependent inhibition of forskolin-stimulated intracellular cAMP level upon treatment with ligand, measured with cAMP HiRange kit (Cisbio 62AM6PEC). **Figure 3.** Receptor expression on cell surface measured by flow cytometry (FACS) using an anti-FLAG antibody. Thin line: parental cells; thick line: receptor-expressing cells.

**References:**

Knaus *et al* (2007) Alpha2-adrenoceptor subtypes--unexpected functions for receptors and ligands derived from gene-targeted mouse models. *Neurochem Int* 51:277-281.

Philipp *et al* (2002) Physiological significance of alpha(2)-adrenergic receptor subtype diversity: one receptor is not enough. *Am J Physiol Regul Integr Comp Physiol* 283:R287-R295.

**FOR RESEARCH USE ONLY.**

© 2005 Multispan Inc. All rights reserved. No part of this document may be reproduced in any form without prior permission in writing.

www.multispaninc.com  
sales@multispaninc.com  
support@multispaninc.com

Ver. October 2005

Phone: +1 (510) 887-0817  
Fax: +1 (510) 887-0863  
26219 Eden Landing Road  
Hayward, CA 94545-3718  
U.S.A.