

MULTISCREEN™ STABLE CELL LINE RECOMBINANT SMOOTHENED

Data sheet

PRODUCT INFORMATION

Catalog Number: C1442

Lot Number: C1442-063006

Quantity: 1 vial (2 x 10⁶) frozen cells

Freeze Medium: Sigma Freezing Medium (C-6164)

Host cell: HEK293T

Transfection: Expression vector containing full-length human SMO cDNA (GenBank Accession Number: NM_005631.3) with FLAG tag sequence at N-terminus

Recommended Storage: Liquid nitrogen upon receiving

Propagation Medium: DMEM, 10% FBS, 1 µg/mL puromycin

Stability: Stable in culture for minimum of two months

Background: The human smoothened homolog SMO strongly resembles that of the frizzled family of proteins, the receptors of the Wnt signaling pathway, which share several features with the Hedgehog pathway. Most often SMO functions during embryonic development, in processes such as digit patterning in the chick limb bud and left-right asymmetry of vertebrate embryos. In addition, SMO function is fundamental for the maintenance of tissue homeostasis in adults, and deregulated SMO signaling is implicated in tumorigenesis.

Application: Binding assays

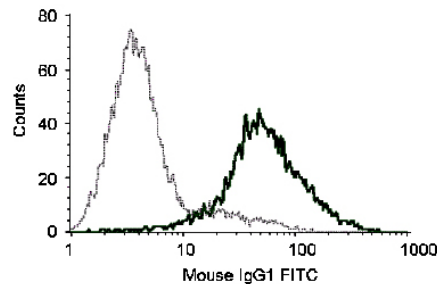


Figure Legend: Receptor expression on cell surface measured by flow cytometry (FACS) using an anti-FLAG antibody

Reference: Ruiz-Gómez *et al.* (2007) The cell biology of Smo signaling and its relationships with GPCRs. *Biochim Biophys Acta* 1768:901-912.

FOR RESEARCH USE ONLY.

© 2005 Multispan Inc. All rights reserved. No part of this document may be reproduced in any form without prior permission in writing.

www.multispaninc.com
sales@multispaninc.com
support@multispaninc.com

Ver. October 2005

Phone: +1 (510) 887-0817
Fax: +1 (510) 887-0863
26219 Eden Landing Road
Hayward, CA 94545-3718
U.S.A.