

**MULTISCREEN™ STABLE CELL LINE
HUMAN RECOMBINANT CB1 RECEPTOR**

Data sheet

PRODUCT INFORMATION

Catalog Number: C1229

Lot Number: C1229-062308

Quantity: 1 vial (2×10^6) frozen cells

Freeze Medium: Sigma Freezing Medium (C-6164)

Host cell: HEK293T

Transfection: Expression vector containing full-length human CNR1 cDNA (GenBank Accession Number NM_016083.3) with FLAG tag sequence at N-terminus

Recommended Storage: Liquid nitrogen upon receiving

Propagation Medium: DMEM, 10% FBS, 1 μ g/mL puromycin

Stability: Stable after minimum of two months continuous growth

Background: Cannabinoid Receptor 1, CNR1 also known as CB1, is involved in cannabinoid induced CNS effects. It acts by inhibiting intracellular adenylate cyclase activity and could be a receptor for anandamide. CNR1 is a potential target for the development of novel therapeutic drugs in the treatment of various conditions, such as pain, feeding disorders, vascular disease, Parkinson's disease, and other central nerve system disorders.

Application: Functional assays

Figure 1

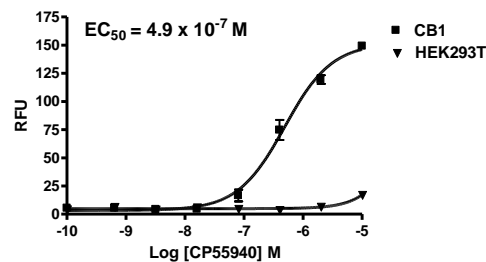


Figure 2

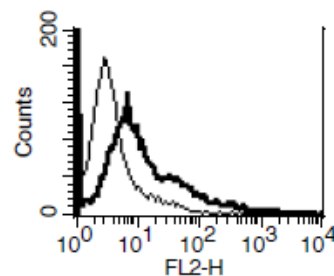


Figure 1. Dose-dependent stimulation of calcium flux upon treatment with ligand, monitored with FlexStation. **Figure 2.** Receptor expression on cell surface measured by flow cytometry (FACS) using an anti-FLAG antibody. Thin line: parental cells; thick line: receptor-expressing cells.

References:

Mendizabal and Adler-Graschinsky (2003) Cannabinoid system as a potential target for drug development in the treatment of cardiovascular disease. *Curr Vasc Pharmacol* 1:301-313.

Gerard *et al.* (1990) Nucleotide sequence of a human cannabinoid receptor cDNA. *Nucleic Acids Res* 18:7142.

FOR RESEARCH USE ONLY.

© 2005 Multispan Inc. All rights reserved. No part of this document may be reproduced in any form without prior permission in writing.

www.multispaninc.com
sales@multispaninc.com
support@multispaninc.com

Ver. October 2005

Phone: +1 (510) 887-0817
Fax: +1 (510) 887-0863
26219 Eden Landing Road
Hayward, CA 94545-3718
U.S.A.