

## MULTISCREEN™ STABLE CELL LINE HUMAN RECOMBINANT CCR10 RECEPTOR

### Data sheet

#### PRODUCT INFORMATION

**Catalog Number:** CG1018-1

**Lot Number:** CG1018-1-042313

**Quantity:** 1 vial ( $2 \times 10^6$ ) frozen cells

**Freeze Medium:** Sigma Freezing Medium (C-6164)

**Host cell:** CHO-K1 Gαq5

**Transfection:** Full-length human CCR10 cDNA (GenBank accession Number NM\_016602.2) with FLAG tag sequence at N-terminus

**Recommended Storage:** Liquid nitrogen upon receiving

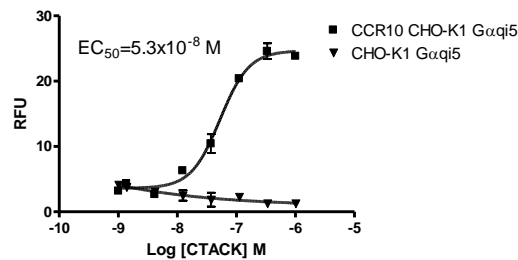
**Propagation Medium:** DMEM/F12, 10% FBS, 10 µg/mL puromycin, 250 µg/mL hygromycin

**Stability:** In progress

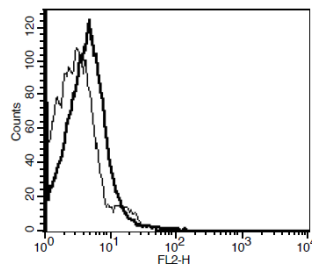
**Background:** CCR10 (also known as GPR2) is selectively expressed by IgA-secreting cells including circulating IgA+ plasmablasts, as well as almost all IgA+ plasma cells in the salivary gland, small intestine, large intestine, appendix and tonsils. It is a receptor for CCL27/CTACK and CCL28/MEC. Expression of CCL27 in skin may play an important role in facilitating memory T cells that express CCR10 to enter into cutaneous sites during inflammation and in determining the metastatic destination of malignant melanoma.

**Application:** Functional assays

**Figure 1**



**Figure 2**



**Figure 1.** Dose-dependent stimulation of calcium flux upon treatment with ligand, monitored with FlexStation. **Figure 2.** Receptor expression on cell surface measured by flow cytometry (FACS) using an anti-FLAG antibody. Thin line: parental cells; thick line: receptor-expressing cells.

#### References:

Muller *et al.* (2001) Involvement of chemokine receptors in breast cancer metastasis. *Nature* 410:50-56.

Kunkel *et al.* (2003) CCR10 expression is a common feature of circulating and mucosal epithelial tissue IgA Ab-secreting cells. *J Clin Invest* 111:1001-1010.

Hudak *et al.* (2002) Immune surveillance and effector functions of CCR10(+) skin homing T cells. *J Immunol* 169:1189-1196.

**FOR RESEARCH USE ONLY.**

© 2005 Multispan Inc. All rights reserved. No part of this document may be reproduced in any form without prior permission in writing.

www.multispaninc.com  
sales@multispaninc.com  
support@multispaninc.com

Ver. October 2005

Phone: +1 (510) 887-0817  
Fax: +1 (510) 887-0863  
26219 Eden Landing Road  
Hayward, CA 94545-3718  
U.S.A.