

MULTISCREEN™ STABLE CELL LINE HUMAN RECOMBINANT CRF2 RECEPTOR

Data sheet

PRODUCT INFORMATION

Catalog Number: CG1041

Lot Number: CG1041-011414

Quantity: 1 vial (2×10^6) frozen cells

Freeze Medium: Sigma Freezing Medium (C-6164)

Host cell: HEK293T Gα16

Transfection: Expression vector containing full-length human CRHR2 cDNA (GenBank Accession Number NM_001883.3) with FLAG tag sequence at N-terminus

Recommended Storage: Liquid nitrogen upon receiving

Propagation Medium: DMEM, 10% FBS, 1 μg/mL puromycin, 1 mg/mL G418

Stability: In progress

Background: CRF2 is a member of the corticotrophin-releasing factor (CRF) receptor family. It is expressed in the brain, blood vessels and intestine. CRF plays an integral role in the coordinating endocrine and behavioral responses to stress as well as in the pathophysiology of several neuropsychiatric diseases such as depression, anxiety and addiction. CRF2 is involved in stress responses, cardiovascular function and gastric motility. Recent clinical data suggest that CRF-related agents may be promising in the treatment of various endocrine, psychiatric, neurologic and inflammatory diseases. CRF2 agonists may be useful in the treatment of upper-GI inflammatory diseases.

Application: Functional assays

Figure 1

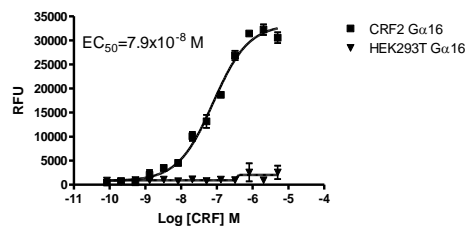


Figure 2

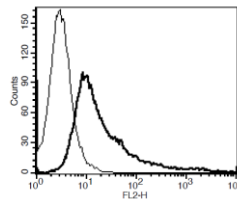


Figure 1. Dose-dependent stimulation of calcium flux upon treatment with ligand, monitored with FLIPR. **Figure 2.** Receptor expression on cell surface measured by flow cytometry (FACS) using an anti-FLAG antibody. Thin line: parental cells; thick line: receptor-expressing cells.

References:

De Souza (1995) Corticotrophin-releasing factor receptors: physiology, pharmacology, biochemistry and role in central nervous system and immune disorders. *Psychoneuroendocrinology* 20:789-819.

Gravanis *et al.* (2005) The corticotrophin-releasing factor. *Curr Med Chem* 12:1503-1512.

Liaw *et al.* (1996) Cloning and characterization of the human corticotrophin-releasing factor-2 receptor complementary deoxyribonucleic acid. *Endocrinology* 137:72-77.

FOR RESEARCH USE ONLY.

© 2005 Multispan Inc. All rights reserved. No part of this document may be reproduced in any form without prior permission in writing.

www.multispaninc.com
sales@multispaninc.com
support@multispaninc.com

Ver. October 2005

Phone: +1 (510) 887-0817
Fax: +1 (510) 887-0863
26219 Eden Landing Road
Hayward, CA 94545-3718
U.S.A.