

**MULTISCREEN™ DIVISION ARRESTED CELL LINE  
HUMAN RECOMBINANT CXCR4 RECEPTOR**

**Data sheet**

**PRODUCT INFORMATION**

**Catalog Number:** DC1004-1

**Lot Number:** DC1004-1-05152012

**Quantity:** 1 vial ( $4 \times 10^6$ ) frozen cells

**Freeze Medium:** Sigma Freezing Medium (C-6164)

**Host cell:** HEK293T

**Transfection:** Expression vector containing full-length human CXCR4 cDNA (GenBank Accession Number NM\_003467) with FLAG tag sequence at N-terminus

**Recommended Storage:** Liquid nitrogen upon receiving

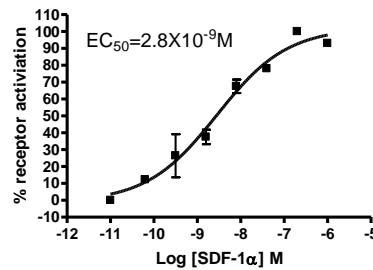
**Propagation Medium:** DMEM/F12, 10% FBS

**Stability:** Stable for 1-2 days after thawing

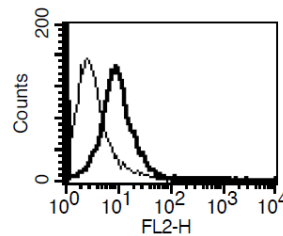
**Background:** CXCR4 is a receptor for the C-X-C chemokine SDF-1 (Stromal Cell-Derived Factor 1). It is involved in haematopoiesis and cardiac ventricular septum formation, and plays an essential role in vascularization of the gastrointestinal tract, cerebellar development and survival of hippocampal-neuron of central nerve system. CXCR4 also acts as a primary receptor for some HIV-2 isolates and as a co-receptor with CD4 for HIV-1 X4 viruses.

**Application:** Functional assays

**Figure 1**



**Figure 2**



**Figure 1.** Dose-dependent inhibition of forskolin-stimulated intracellular cAMP level upon treatment with ligand, measured with cAMP HiRange kit (Cisbio 62AM6PEC). **Figure 2.** Receptor expression on cell surface measured by flow cytometry (FACS) using an anti-FLAG antibody. Thin line: parental cells; thick line: receptor-expressing cells.

**References:**

Hernandez *et al.* (2003) Mutations in the chemokine receptor gene CXCR4 are associated with WHIM syndrome, a combined immunodeficiency disease. *Nat Genet* 34:70-74.

Juarez *et al.* (2004) Chemokines and their receptors as therapeutic targets: the role of the SDF-1/CXCR4 axis. *Curr Pharm Des* 10:1245-1259.

**FOR RESEARCH USE ONLY.**

© 2005 Multispan Inc. All rights reserved. No part of this document may be reproduced in any form without prior permission in writing.

www.multispaninc.com  
sales@multispaninc.com  
support@multispaninc.com

Ver. October 2005

Phone: +1 (510) 887-0817  
Fax: +1 (510) 887-0863  
26219 Eden Landing Road  
Hayward, CA 94545-3718  
U.S.A.