

MULTISCREEN™ STABLE CELL LINE HUMAN RECOMBINANT FPR1 RECEPTOR

Data sheet

PRODUCT INFORMATION

Catalog Number: CG1243

Lot Number: CG1243-021506

Quantity: 1 vial (2×10^6) frozen cells

Freeze Medium: Sigma Freezing Medium (C-6164)

Host cell: HEK293T Gaq5

Transfection: Expression vector containing full-length human FPR1 cDNA (GenBank Accession Number NM_002029.3) with FLAG tag sequence at N-terminus.

Recommended Storage: Liquid nitrogen upon receiving

Propagation Medium: DMEM, 10% FBS, 1 $\mu\text{g}/\text{mL}$ puromycin, 150 $\mu\text{g}/\text{mL}$ hygromycin

Stability: Stable after minimum of 2 months continuous growth

Background: The gene FPR1 encodes the formylpeptide receptor (FPR), which is a G-protein-coupled receptor that mediates chemotaxis of phagocytic leukocytes induced by bacterial peptide N-formyl-methionyl-leucyl-phenylalanine (fMLP). Agonist binding to FPR in phagocytic leukocytes leads to the activation of phosphatidylinositol 3-kinase (PI3K), mitogen-activated protein kinases (MAPKs), and the transcription factor nuclear factor (NF)- κB via heterotrimeric G_{ai} proteins. FPR is involved in host defense against bacterial infection and in the clearance of damaged cells. Recently a large number of non-formylated peptide ligands for FPR have now been identified. Some of the new ligands (e.g. Ac1-26 from annexin) are endogenous in origin, and some come from pathogens that are associated with human diseases such as HIV, which have suggested novel roles for this receptor in the regulation of acute and chronic inflammation as well as host responses during HIV-1 infection.

Application: Functional assays

Figure 1

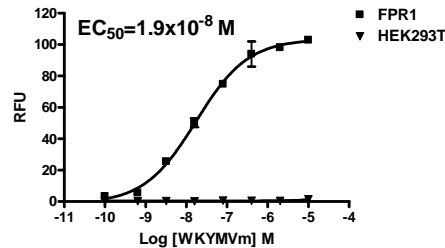


Figure 2

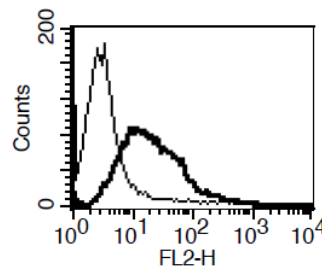


Figure 1. Dose-dependent stimulation of calcium flux upon treatment with ligand, monitored with FlexStation. **Figure 2.** Receptor expression on cell surface measured by flow cytometry (FACS) using an anti-FLAG antibody. Thin line: parental cells; thick line: receptor-expressing cells.

References:

Le *et al.* (2002) Formyl-peptide receptors revisited. *Trends Immunol* 23:541-548.

Torres and Ye (1996) Activation of the mitogen-activated protein kinase pathway by fMet-leu-Phe in the absence of Lyn and tyrosine phosphorylation of SHC in transfected cells. *J Biol Chem* 271:13244-13249.

FOR RESEARCH USE ONLY.

© 2005 Multispan Inc. All rights reserved. No part of this document may be reproduced in any form without prior permission in writing.

www.multispaninc.com
sales@multispaninc.com
support@multispaninc.com

Ver. October 2005

Phone: +1 (510) 887-0817
Fax: +1 (510) 887-0863
26219 Eden Landing Road
Hayward, CA 94545-3718
U.S.A.