

**MULTISCREEN™ STABLE CELL LINE  
HUMAN RECOMBINANT GHRH RECEPTOR**

**Data sheet**

**PRODUCT INFORMATION**

**Catalog Number:** C1291

**Lot Number:** C1291-051506

**Quantity:** 1 vial ( $2 \times 10^6$ ) frozen cells

**Freeze Medium:** Sigma Freezing Medium (C-6164)

**Host cell:** HEK293T

**Transfection:** Expression vector containing full-length human GHRHR cDNA (GenBank Accession Number NM\_000823) with FLAG tag sequence at N-terminus.

**Recommended Storage:** Liquid nitrogen upon receiving

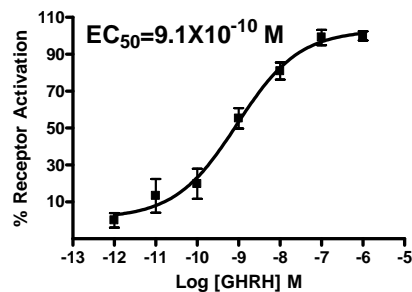
**Propagation Medium:** DMEM, 10% FBS, 1  $\mu$ g/ml puromycin

**Stability:** Stable after minimum of two months continuous growth

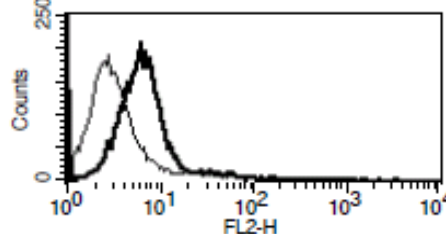
**Background:** Growth hormone-releasing hormone (GHRH), acting through the GHRH receptor GHRHR, plays a pivotal role in the regulation of GH synthesis and secretion in the pituitary. The isolated cDNA of the GHRHR predicted a 423-amino acid protein that has 7 putative transmembrane domains, characteristic of G protein-coupled receptors. It is a member of the secretin family of G protein-coupled receptors and has 47%, 42%, 35%, and 28% identity with receptors for vasoactive intestinal peptide, secretin, calcitonin and parathyroid hormone, respectively.

**Application:** Functional assays

**Figure 1**



**Figure 2**



**Figure 1.** Dose-dependent accumulation of intracellular cAMP upon treatment with ligand, measured with cAMP HiRange kit (Cisbio 62AM6PEC). **Figure 2.** Receptor expression on cell surface measured by flow cytometry (FACS) using an anti-FLAG antibody. Thin line: parental cells; thick line: receptor-expressing cells.

**References:**

Gaylinn et al. (1993) Molecular cloning and expression of a human anterior pituitary receptor for growth hormone-releasing hormone. *Molec. Endocr* 7:77-84.

DeAlmeida and Mayo (1998) Identification and binding domains of the growth hormone-releasing hormone receptor by analysis of mutant and chimeric receptor proteins. *Molec Endocr* 12:750-765.

**FOR RESEARCH USE ONLY.**

© 2005 Multispan Inc. All rights reserved. No part of this document may be reproduced in any form without prior permission in writing.

www.multispaninc.com  
sales@multispaninc.com  
support@multispaninc.com

Ver. October 2005

Phone: +1 (510) 887-0817  
Fax: +1 (510) 887-0863  
26219 Eden Landing Road  
Hayward, CA 94545-3718  
U.S.A.