

## MULTISCREEN™ STABLE CELL LINE HUMAN RECOMBINANT GPR85 RECEPTOR

### Data sheet

#### PRODUCT INFORMATION

**Catalog Number:** C1138-1

**Lot Number:** C1138-1-020817

**Quantity:** 1 vial ( $2 \times 10^6$ ) frozen cells

**Freeze Medium:** 90%FBS, 10% DMSO

**Host cell:** CHO-K1

**Transfection:** Expression vector containing full-length human GPR85 cDNA (GenBank Accession Number NM\_018970.3) with FLAG tag sequence at N-terminus

**Recommended Storage:** Liquid nitrogen upon receiving

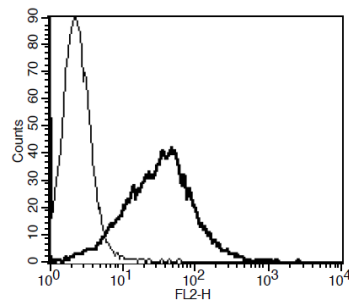
**Propagation Medium:** DMEM/F12, 10% FBS, 10  $\mu$ g/mL puromycin

**Stability:** In progress

**Background:** GPR85 (G protein-coupled receptor 85) is also known as SREB2 (Super Conserved Receptor Expressed in Brain 2) and belongs to the family of class A (rhodopsin-like) orphan G protein-coupled receptors. The receptor is reported to be highly expressed in the brain and testis. Research has linked GPR85 to influences of brain size, behavior, and vulnerability to schizophrenia.

**Application:**

**Figure 1**



**Figure 1.** Receptor expression on cell surface measured by flow cytometry (FACS) using an anti-FLAG antibody. Thin line: parental cells; thick line: receptor-expressing cells.

#### References:

Yanai *et al.* (2016) Identification and molecular docking studies for novel inverse agonists of SREB, super conserved receptor expressed in brain. *Genes to Cells* 21:717-727.

**FOR RESEARCH USE ONLY.**

All rights reserved. No part of this document may be reproduced in any form without prior permission in writing.