

**MULTISCREEN™ STABLE CELL LINE
HUMAN RECOMBINANT GLUCAGON RECEPTOR**

Data sheet

PRODUCT INFORMATION

Catalog Number: C1266

Lot Number: C1266-103009

Quantity: 1 vial (2×10^6) frozen cells

Freeze Medium: Sigma Freezing Medium (C-6164)

Host cell: HEK293T

Transfection: Expression vector containing full-length human GCGR cDNA (GenBank Accession Number NM_000160) with FLAG tag sequence at N-terminus

Recommended Storage: Liquid nitrogen upon receiving

Propagation Medium: DMEM, 10% FBS, 1 μ g/mL puromycin

Stability: Stable in culture for minimum of two months

Background: The human glucagon receptor GCGR mediates the action of the pancreatic peptide hormone glucagon. Glucagon regulates blood glucose via control of hepatic glycogenolysis and gluconeogenesis and via regulation of insulin release from the β cell. Type 2 diabetes is characterized by inappropriate regulation of hepatic glucose production, which is due to an imbalance in the bihormonal relationship between plasma levels of glucagon and insulin. The glucose-lowering effects of glucagon peptide antagonists and anti-glucagon antibodies have demonstrated the potential of glucagon receptor antagonism as a treatment for type 2 diabetes. Glucagon also elicits various effects in extrahepatic tissues, including adipose tissue, kidney, heart, pancreatic β cells, gastrointestinal tract, thyroid and central nervous system.

Application: Functional assays

Figure 1

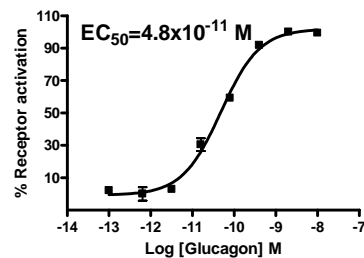


Figure 2

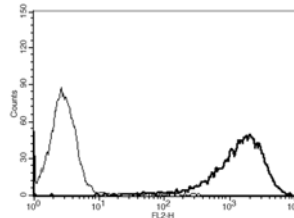


Figure 1. Dose-dependent stimulation of intracellular cAMP accumulation upon treatment with ligand, measured with cAMP HiRange kit (Cisbio 62AM6PEC).

Figure 2. Receptor expression on cell surface measured by flow cytometry (FACS) using an anti-FLAG antibody. Thin line: parental cells; thick line: receptor-expressing cells.

References:

Lok *et al.* (1994) The human glucagon receptor encoding gene: structure, cDNA sequence and chromosomal localization. *Gene* 140:203-209.

Sloop *et al.* (2005) Glucagon as a target for the treatment of Type 2 diabetes. *Expert Opin Ther Targets* 9:593-600.

FOR RESEARCH USE ONLY.

© 2005 Multispan Inc. All rights reserved. No part of this document may be reproduced in any form without prior permission in writing.

www.multispaninc.com
sales@multispaninc.com
support@multispaninc.com

Ver. October 2005

Phone: +1 (510) 887-0817
Fax: +1 (510) 887-0863
26219 Eden Landing Road
Hayward, CA 94545-3718
U.S.A.