

MULTISCREEN™ STABLE CELL LINE HUMAN RECOMBINANT MOTILIN RECEPTOR

Data sheet

PRODUCT INFORMATION

Catalog Number: H1297

Lot Number: H1297-071211

Quantity: 1 vial (2×10^6) frozen cells

Freeze Medium: Sigma Freezing Medium (C-6164)

Host cell: HEK293T

Transfection: Expression vector containing full-length human MLNR cDNA (GenBank Accession Number NM_001507.1) with FLAG tag sequence at N-terminus

Recommended Storage: Liquid nitrogen upon receiving

Propagation Medium: DMEM, 10% FBS, 1 μ g/mL puromycin

Stability: Stable for minimum of two months in culture

Background: Motilin is a 22-amino acid peptide hormone that is expressed throughout the gastrointestinal (GI) tract as well as in enteric neurons of the duodenum and colon. It plays an important role in gastric motility by stimulating interdigestive antrum and duodenal contractions. Development of motilin receptor agonists or antagonists could be useful in the treatment of GI disorders.

Application: Functional assays

Figure 1

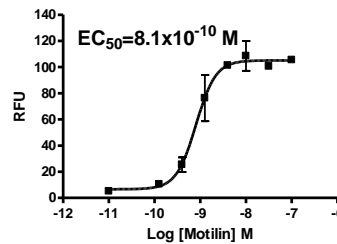


Figure 2

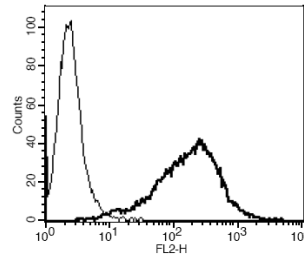


Figure 1. Dose-dependent stimulation of calcium flux upon treatment with ligand, monitored with FlexStation. **Figure 2.** Receptor expression on cell surface measured by flow cytometry (FACS) using an anti-FLAG antibody. Thin line: parental cells; thick line: receptor-expressing cells.

References:

Depoortere (2001) Motilin and motilin receptors: characterization and functional significance. *Verh K Acad Geneesk Belg* 63:511-529.

De Smet *et al.* (2009) Motilin and ghrelin as prokinetic drug targets. *Pharmacol Ther* 123:207-223.

FOR RESEARCH USE ONLY.

© 2005 Multispan Inc. All rights reserved. No part of this document may be reproduced in any form without prior permission in writing.

www.multispaninc.com
sales@multispaninc.com
support@multispaninc.com

Ver. October 2005

Phone: +1 (510) 887-0817
Fax: +1 (510) 887-0863
26219 Eden Landing Road
Hayward, CA 94545-3718
U.S.A.