

## MULTISCREEN™ STABLE CELL LINE MOUSE RECOMBINANT GIP RECEPTOR

### Data sheet

#### PRODUCT INFORMATION

**Catalog Number:** Cm1290

**Lot Number:** Cm1290-073118

**Quantity:** 1 vial ( $2 \times 10^6$ ) frozen cells

**Freeze Medium:** Cellbanker 2  
(Amsbio 11891)

**Host cell:** HEK293T

**Transfection:** Expression vector containing full-length mouse GIPR cDNA (GenBank accession number Q0P543) with FLAG tag sequence at N-terminus

**Recommended Storage:** Liquid nitrogen upon receiving

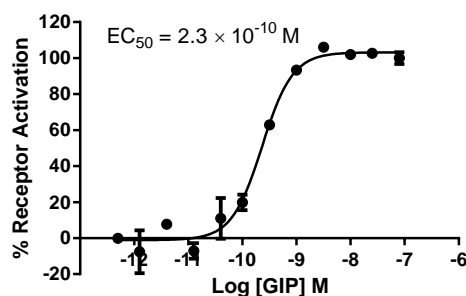
**Propagation Medium:** DMEM, 10% FBS, 1  $\mu$ g/mL puromycin

**Stability:** Stability in progress

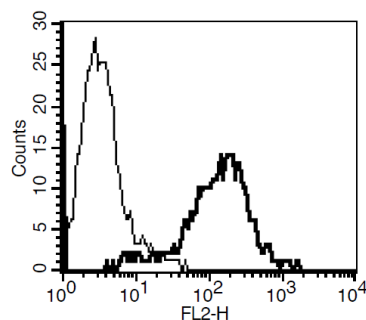
**Background:** GIP (gastric inhibitory polypeptide) is released from the gastrointestinal tract, stimulates insulin secretion from pancreatic beta-cells, and plays a crucial role in the regulation of insulin secretion. Its receptor GIPR is expressed in the pancreas, stomach, small intestine, adipose tissue, adrenal cortex, pituitary, heart, testis, endothelial cells, bone, trachea, spleen, thymus, lung, kidney, thyroid, and several regions in the CNS. GIPR may have therapeutic potential in the treatment of type 2 diabetes and obesity.

**Application:** Functional assays

**Figure 1**



**Figure 2**



**Figure 1.** Dose-dependent stimulation of intracellular cAMP accumulation upon treatment with ligand, measured with Multiscreen™ TR-FRET cAMP 1.0 No Wash Assay Kit (Multispan MSCM01). **Figure 2.** Receptor expression on cell surface measured by flow cytometry (FACS) using an anti-FLAG antibody. Thin line: parental cells; thick line: receptor-expressing cells.

#### References:

Irwin *et al.* (2009) Therapeutic potential for GIP receptor agonists and antagonists. *Best Pract Res Clin Endocrinol Metab* 23:499-512.

Yamada *et al.* (1995) Human gastric inhibitory polypeptide receptor: cloning of the gene (GIPR) and cDNA. *Genomics* 29:773-776.

**FOR RESEARCH USE ONLY.**

All rights reserved. No part of this document may be reproduced in any form without prior permission in writing.