

MULTISCREEN™ MEMBRANE PREPARATION HUMAN RECOMBINANT NPY5 RECEPTOR

Data sheet

PRODUCT INFORMATION

Catalog Number: MCG1275

Lot Number: MCG1275-11222013

Quantity: 24.64 mg/ml, 1 mg

Packaging Buffer: 20 mM Gly-Gly, 1 mM MgCl₂, 25 mM Sucrose (pH 7.2)

Host cell: HEK293T Gaqi5

Transfection: Expression vector containing full-length human NPY5R cDNA (GenBank Accession Number NM_006174) with FLAG tag sequence at N-terminus

Recommended Storage: Liquid nitrogen upon receiving

Background: The human NPY5 receptor mRNA expresses largely in the central nervous system, and highly expressed in hypothalamic and thalamic nuclei. Neuropeptide Y has a major role in the physiological control of energy homeostasis, and the NPY5 receptor is a prime candidate to mediate some of the effects through metabolic changes such as decreased lipolysis and thermogenesis, as well as hyperphagia. NPY5 is involved in both spontaneous as well as NPY-stimulated food intake and in NPY-induced reduction of blood glucose concentrations. NPY5 also plays an important role in neuroendocrine functions. It mediates the inhibitory effects of NPY on the HPT axis, and may function as part of an endogenous stress-sensing system to mediate social anxiety and motivational deficits. In addition, NPY5 may be involved in NPY-induced ischemic angiogenesis and opioid dependence and withdrawal.

Figure 1

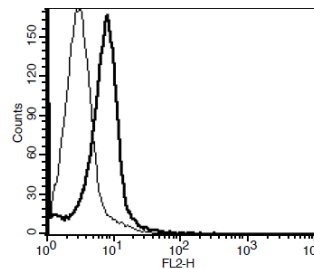


Figure 1. Receptor expression on cell surface measured by flow cytometry (FACS) using an anti-FLAG antibody. Thin line: parental cells; thick line: receptor-expressing cells.

References:

Gerald *et al.* (1996) A receptor subtype involved in neuropeptide-Y induced food intake. *Nature* 382:168-171.

Hu *et al.* (1996) Identification of a novel hypothalamic neuropeptide Y receptor associated with feeding behavior. *J Biol Chem* 271:26315-26319.

FOR RESEARCH USE ONLY.

© 2005 Multispan Inc. All rights reserved. No part of this document may be reproduced in any form without prior permission in writing.

www.multispaninc.com
sales@multispaninc.com
support@multispaninc.com

Ver. October 2005

Phone: +1 (510) 887-0817
Fax: +1 (510) 887-0863
26219 Eden Landing Road
Hayward, CA 94545-3718
U.S.A.