

**MULTISCREEN™ MEMBRANE PREPARATION
HUMAN RECOMBINANT S1P5 RECEPTOR**

Data sheet

PRODUCT INFORMATION

Catalog Number: MC1054-1

Lot Number: MC1054-1-11052012

Quantity: 1 vial (9.7mg/ml, 50uL)

Host cell: CHO-K1

Transfection: Expression vector containing full-length human S1P5 cDNA (GenBank Accession Number: NM_030760) with FLAG tag sequence at N-terminus

Recommended Storage: Liquid nitrogen

Background: The lysosphingolipid sphingosine 1-phosphate (S1P) regulates cell proliferation, apoptosis, motility, and neurite retractions. S1P and the structurally related LPA signal cells through a set of G-protein-coupled receptors known as EDG receptors. S1P5 or EDG8 is a 400-amino acid 7 transmembrane protein that shares 42-49% amino acid identity with the human S1P receptors EDG1, EDG3, and EDG5. Northern blot analysis has shown widespread expression of EDG8 in rat tissues, with strongest expression in spleen and white matter tracts of the brain.

Application: [³⁵S]GTPγS Binding Assay

Figure 1

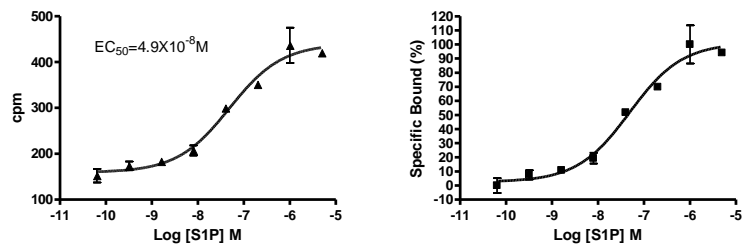


Figure 2

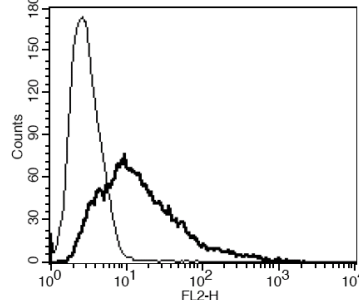


Figure 1. Dose-dependent [³⁵S]GTPγS Binding to S1P5 membrane upon treatment with agonist using homogenous proximity assay method. **Figure 2.** Dose-dependent inhibition [³⁵S]GTPγS Binding upon treatment with antagonist. **Figure 3.** Receptor expression on cell surface measured by flow cytometry (FACS) using an anti-FLAG antibody. Thin line: parental cells; thick line: receptor-expressing cells.

References:

Takuwa *et al.* (2001) Subtype-specific, differential activities of the EDG family receptors for sphingosine-1-phosphate, a novel lysophospholipid mediator. *Mol Cell Endocrinol* 177:3-11.

FOR RESEARCH USE ONLY.

© 2005 Multispan Inc. All rights reserved. No part of this document may be reproduced in any form without prior permission in writing.

www.multispaninc.com
sales@multispaninc.com
support@multispaninc.com

Ver. October 2005

Phone: +1 (510) 887-0817
Fax: +1 (510) 887-0863
26219 Eden Landing Road
Hayward, CA 94545-3718
U.S.A.