

**MULTISCREEN™ DIVISION ARRESTED CELL LINE  
RECOMBINANT SMOOTHENED**

---

**Data sheet**

**PRODUCT INFORMATION**

**Catalog Number:** DC1442

**Lot Number:** DC1442-100516

**Quantity:** 1 vial (4 x 10<sup>6</sup>) frozen cells

**Freeze Medium:** AMSBio Cellbanker2 (11891)

**Host cell:** HEK293T

**Transfection:** Expression vector containing full-length human SMO cDNA (GenBank Accession Number: NM\_005631.3) with FLAG tag sequence at N-terminus

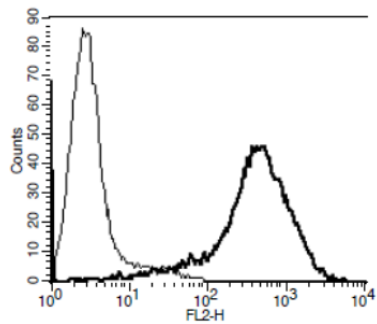
**Recommended Storage:** Liquid nitrogen upon receiving

**Propagation Medium:** DMEM, 10% FBS, 1 µg/mL puromycin

**Stability:** Stable for 1-2 days after thawing

**Background:** The human smoothened homolog SMO strongly resembles that of the frizzled family of proteins, the receptors of the Wnt signaling pathway, which share several features with the Hedgehog pathway. Most often SMO functions during embryonic development, in processes such as digit patterning in the chick limb bud and left–right asymmetry of vertebrate embryos. In addition, SMO function is fundamental for the maintenance of tissue homeostasis in adults, and deregulated SMO signaling is implicated in tumorigenesis.

**Application:** Binding assays



**Figure Legend:** Receptor expression on cell surface measured by flow cytometry (FACS) using an anti-FLAG antibody

**Reference:** Ruiz-Gómez *et al.* (2007) The cell biology of Smo signaling and its relationships with GPCRs. *Biochim Biophys Acta* 1768:901-912.

**FOR RESEARCH USE ONLY.**

Multispan Inc. All rights reserved. No part of this document may be reproduced in any form without prior permission in writing.