

MULTISCREEN™ MEMBRANE
HUMAN RECOMBINANT SMO RECEPTOR

Data sheet

PRODUCT INFORMATION

Catalog Number: MC1442

Lot Number: MC1442-01062012

Quantity: 1 vial (18.8mg/ml, 10mg) membrane

Host cell: HEK293T

Transfection: Expression vector containing full-length human SMO cDNA (GenBank Accession Number: NM_005631.3) with FLAG tag sequence at N-terminus

Recommended Storage: Liquid nitrogen

Background: The human smoothed homolog SMO strongly resembles that of the frizzled family of proteins, the receptors of the Wnt signaling pathway, which share several features with the Hedgehog pathway. Most often SMO functions during embryonic development, in processes such as digit patterning in the chick limb bud and left-right asymmetry of vertebrate embryos. In addition, SMO function is fundamental for the maintenance of tissue homeostasis in adults, and deregulated SMO signaling is implicated in tumorigenesis.

Application:
Radioligand Binding Assay

Figure 1

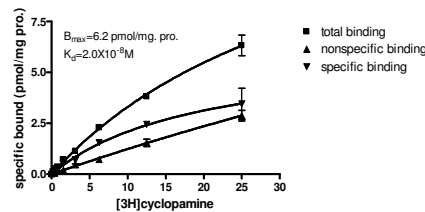


Figure 3

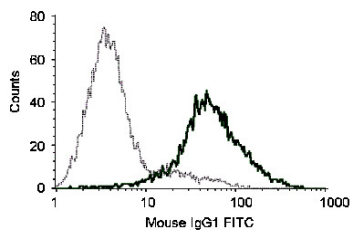


Figure 2

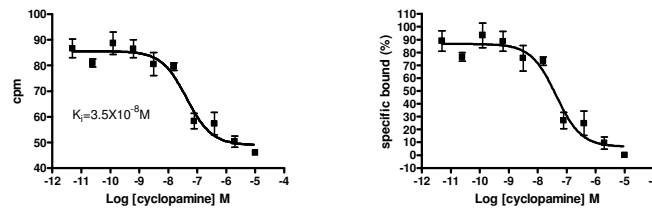


Figure 1. Saturation binding assay curve: Specific binding obtained with SMO membrane with [³H]cyclopamine. **Figure 2. Competition binding assay curve:** Dose dependent competition of SAG for [³H]cyclopamine 5nM. **Figure 3.** Receptor expression on cell surface measured by flow cytometry (FACS) using an anti-FLAG antibody. Thin line: parental cells; thick line: receptor-expressing cells.

References:

Ruiz-Gómez *et al.* (2007) The cell biology of Smo signaling and its relationships with GPCRs. *Biochim Biophys Acta* 1768:901-912.

FOR RESEARCH USE ONLY.

© 2005 Multispan Inc. All rights reserved. No part of this document may be reproduced in any form without prior permission in writing.

www.multispaninc.com
sales@multispaninc.com
support@multispaninc.com

Ver. October 2005

Phone: +1 (510) 887-0817
Fax: +1 (510) 887-0863
26219 Eden Landing Road
Hayward, CA 94545-3718
U.S.A.