

## MULTISCREEN™ STABLE CELL LINE HUMAN RECOMBINANT SST2 RECEPTOR

### Data sheet

#### PRODUCT INFORMATION

**Catalog Number:** CG1346-1

**Lot Number:** CG1346-1-081407

**Quantity:** 1 vial ( $2 \times 10^6$ ) frozen cells

**Freeze Medium:** Sigma Freezing Medium (C-6164)

**Host cell:** CHO-K1 Gα16

**Transfection:** Expression vector containing full-length human SSTR2 cDNA (GenBank Accession Number AY236542) with FLAG tag sequence at N-terminus

**Recommended Storage:** Liquid nitrogen upon receiving

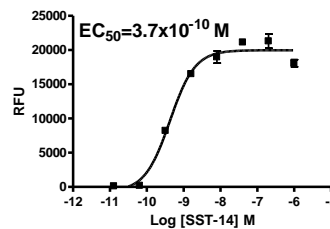
**Propagation Medium:** DMEM/F12, 10% FBS, 800 µg/mL G418, 10 µg/mL puromycin

**Stability:** Stable after minimum of two months continuous growth

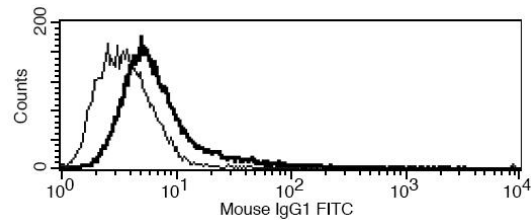
**Background:** Somatostatin receptors are activated by somatostatin secreted from nerve and endocrine cells. The Somatostatin Receptors (SSTRs) are expressed in a tissue-specific manner and involved in the regulation of secretion of insulin, glucagon and growth hormone as well as cell growth induced by neuronal excitation in both the central and peripheral nervous systems. Aberrant expression of somatostatin receptors is known in a large number of human tumours. SSTR2 is expressed in highest levels in the stomach, jejunum, cerebrum, thyroid and kidney. Its gene expression is lost in 90% of human pancreatic adenocarcinomas while SSTR2 expression in neuroblastoma correlates positively to overall and event-free survival. Expression of SSTR-2 and SSTR-5 may be important in the growth inhibitory effect of somatostatin in human pancreatic cancer.

**Application:** Functional assay

**Figure 1**



**Figure 2**



**Figure 1.** Dose-dependent stimulation of intercellular calcium flux upon treatment with ligand, measured with Multiscreen™ Calcium 1.0 No Wash Assay Kit (Multispan MSCA01). **Figure 2.** Receptor expression on cell surface measured by flow cytometry (FACS) using an anti-FLAG antibody. Thin line: parental cells; thick line: receptor-expressing cells.

#### References:

Ardjomand *et al.* (2003) Expression of somatostatin receptors in uveal melanomas. *Invest Ophthalmol Vis Sci* 44:980-987.

Bertherat *et al.* (2003) Somatostatin receptors 2 and 5 are the major somatostatin receptors in insulinomas: an in vivo and in vitro study. *J Clin Endocr Metab* 88:5353-5360.

**FOR RESEARCH USE ONLY.**

Multispan Inc. All rights reserved. No part of this document may be reproduced in any form without prior permission in writing.