

MULTISCREEN™ MEMBRANE PREPARATION HUMAN RECOMBINANT MGLU1 RECEPTOR

Data sheet

PRODUCT INFORMATION

Catalog Number: MC1188

Lot Number: MC1188-1-010214

Quantity: 11.26 mg/ml, 1 mg

Packaging Buffer: 20 mM Gly-Gly, 1 mM MgCl₂, 25 mM Sucrose (pH 7.2)

Host cell: HEK293T

Transfection: Expression vector containing full-length human GRM1 cDNA (Accession Number NM_000838) with FLAG tag sequence at N-terminus

Recommended Storage: Liquid nitrogen upon receiving

Background: The neurotransmitter L-glutamate interacts with both ionotropic and metabotropic receptors. The metabotropic glutamate receptors (mGluRs), which are G protein-coupled receptors, have been divided into 3 groups on the basis of sequence homology, putative signal transduction mechanisms, and pharmacologic properties. Group II and group III mGluRs are linked to the inhibition of the cyclic AMP cascade, but differ in their agonist selectivity.

Figure 1

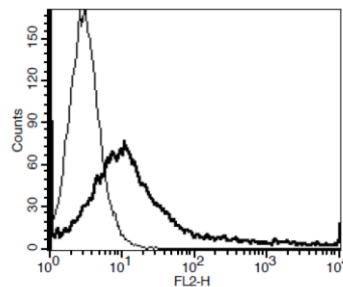


Figure 1. Receptor expression on cell surface measured by flow cytometry (FACS) using an anti-FLAG antibody. Thin line: parental cells; thick line: receptor-expressing cells.

References:

Scherer *et al.* (1996) Localization of two metabotropic glutamate receptor genes, GRM3 and GRM8, to human chromosome 7q. *Genomics* 31:230-233.

Scherer *et al.* (1997) The human metabotropic glutamate receptor 8 (GRM8) gene: a disproportionately large gene located at 7q31.3-q32.1. *Genomics* 44:232-236.

FOR RESEARCH USE ONLY.

© 2005 Multispan Inc. All rights reserved. No part of this document may be reproduced in any form without prior permission in writing.

www.multispaninc.com
sales@multispaninc.com
support@multispaninc.com

Ver. October 2005

Phone: +1 (510) 887-0817
Fax: +1 (510) 887-0863
26219 Eden Landing Road
Hayward, CA 94545-3718
U.S.A.