

## MULTISCREEN™ MEMBRANE PREPARATION HUMAN RECOMBINANT MGLUR6 RECEPTOR

### PRODUCT INFORMATION

**Catalog Number:** MC1193

**Lot Number:** MC1193-12292011

**Quantity:** 9.6mg/ml, 0.5 mg

**Packaging Buffer:** 20 mM Gly-Gly, 1 mM MgCl<sub>2</sub>, 250 mM Sucrose

**Host cell:** HEK293T

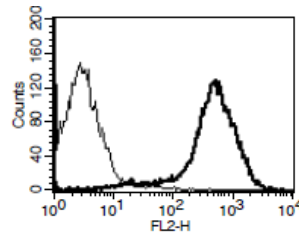
**Transfection:** Expression vector containing full-length human GRM6 cDNA (NM\_000843.3) with FLAG tag sequence at N-terminus

**Recommended Storage:** Liquid nitrogen upon receiving

### Data sheet

**Background:** The metabotropic glutamate receptors (mGluRs) are divided into 3 groups on the basis of sequence homology, putative signal transduction mechanisms, and pharmacological properties. Group II and group III mGluRs are linked to inhibition of the cyclic AMP cascade, but differ in their agonist selectivity. mGluR6 is a member of Group III. It mainly expresses in on-bipolar cells in retina.

**Figure 1**



**Figure 1.** Receptor expression on cell surface measured by flow cytometry (FACS) using an anti-FLAG antibody. Thin line: parental cells; thick line: receptor-expressing cells.

### References:

Laurie *et al.* (1997) Cloning, distribution and functional expression of the human mGlu6 metabotropic glutamate receptor. *Neuropharmacology* 36:145-152.

Dryja *et al.* (2005) Night blindness and abnormal cone electroretinogram on responses in patients with mutations in the GRM6 gene encoding mGluR6. *Proc Natl Acad Sci USA* 102:4884-4889.

**FOR RESEARCH USE ONLY.**

© 2005 Multispan Inc. All rights reserved. No part of this document may be reproduced in any form without prior permission in writing.

www.multispaninc.com  
sales@multispaninc.com  
support@multispaninc.com

Ver. October 2005

Phone: +1 (510) 887-0817  
Fax: +1 (510) 887-0863  
26219 Eden Landing Road  
Hayward, CA 94545-3718  
U.S.A.