

## MULTISCREEN™ STABLE CELL LINE RAT RECOMBINANT ET<sub>A</sub> RECEPTOR

### Data sheet

#### PRODUCT INFORMATION

**Catalog Number:** Cr1216-1

**Lot Number:** Cr1216-1-083112

**Quantity:** 1 vial ( $2 \times 10^6$ ) frozen cells

**Freeze Medium:** Sigma Freezing Medium (C-6164)

**Host cell:** CHO-K1

**Transfection:** Full-length Rat EDNRA cDNA (GenBank Accession Number NM\_012550.2) with FLAG-tag sequence at the N-terminus

**Recommended Storage:** Liquid nitrogen upon receiving

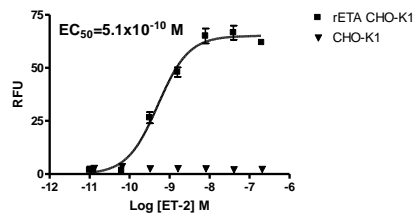
**Propagation Medium:** DME/F12, 10% FBS, 10  $\mu$ g/mL puromycin

**Stability:** In progress

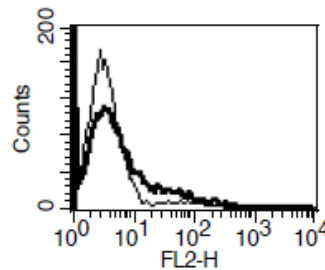
**Background:** Endothelin is a hormone produced predominantly by endothelial cells that have been recognized to play a significant role in the development of several cardiovascular disease states. Its receptor ET<sub>A</sub> has been reported in a variety of tissues including placenta, uterus, testis, heart, adrenal gland, lung, kidney, ovary, skin, liver, bladder, large blood vessels, cerebellum, neurons, and meningioma tumor cells. In the vasculature, ET<sub>A</sub> receptors residing on smooth muscle cells mediate prolonged vasoconstriction. Furthermore, activation of the ET<sub>A</sub> mediates events that regulate mitogenesis, apoptosis, angiogenesis and metastasis in tumors.

**Application:** Functional assays

**Figure 1**



**Figure 2**



**Figure 1.** Dose-dependent stimulation of calcium flux upon treatment with ligand, monitored with FlexStation. **Figure 2.** Receptor expression on cell surface measured by flow cytometry (FACS) using an anti-FLAG antibody. Thin line: parental cells; thick line: receptor-expressing cells.

#### References:

Dupuis (2000) Endothelin receptor antagonists and their developing role in cardiovascular therapeutics. *Can J Cardiol* 16:903-910.

Wu-Wong (2002) Endothelin receptor antagonists as therapeutic agents for cancer. *Curr Opin Investig Drugs* 3:1234-1239.

**FOR RESEARCH USE ONLY.**

© 2005 Multispan Inc. All rights reserved. No part of this document may be reproduced in any form without prior permission in writing.

www.multispaninc.com  
sales@multispaninc.com  
support@multispaninc.com

Ver. October 2005

Phone: +1 (510) 887-0817  
Fax: +1 (510) 887-0863  
26219 Eden Landing Road  
Hayward, CA 94545-3718  
U.S.A.